



Our popular sweat-wicking, breathable tee—now available without sleeves for an even more athletic look and easier movement. And, as always, it's a real value.

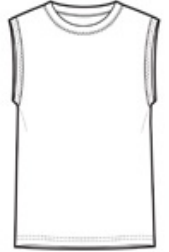
- 3.8-ounce, 100% polyester interlock
- Removable tag for comfort and relabeling
- Double-needle armholes and hem

**Due to the nature of 100% polyester performance fabrics, special care must be taken throughout the screen printing process.*

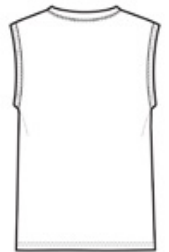
**

CARE INSTRUCTIONS

MACHINE WASH COLD, WITH LIKE COLORS, DO NOT BLEACH, DO NOT USE FABRIC SOFTNER, TUMBLE DRY LOW, REMOVE PROMPTLY, COOL IRON IF NEEDED, DO NOT DRY CLEAN

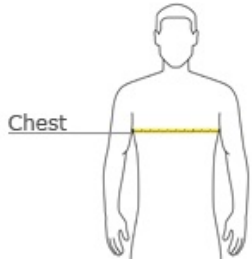


front



back

HOW TO MEASURE



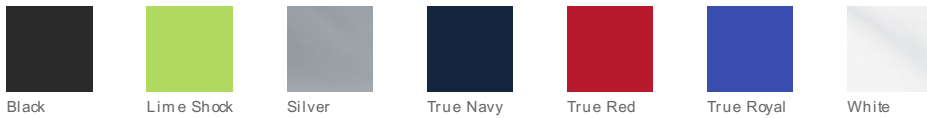
CHEST

With arms down at sides, measure around the upper body, under arms and over the fullest part of the chest.

SIZE CHART

	XS	S	M	L	XL	2XL	3XL	4XL
Chest	32-34	35-37	38-40	41-43	44-46	47-49	50-52	53-55

COLOR INFORMATION



Black Lime Shock Silver True Navy True Red True Royal White